

AGENDA

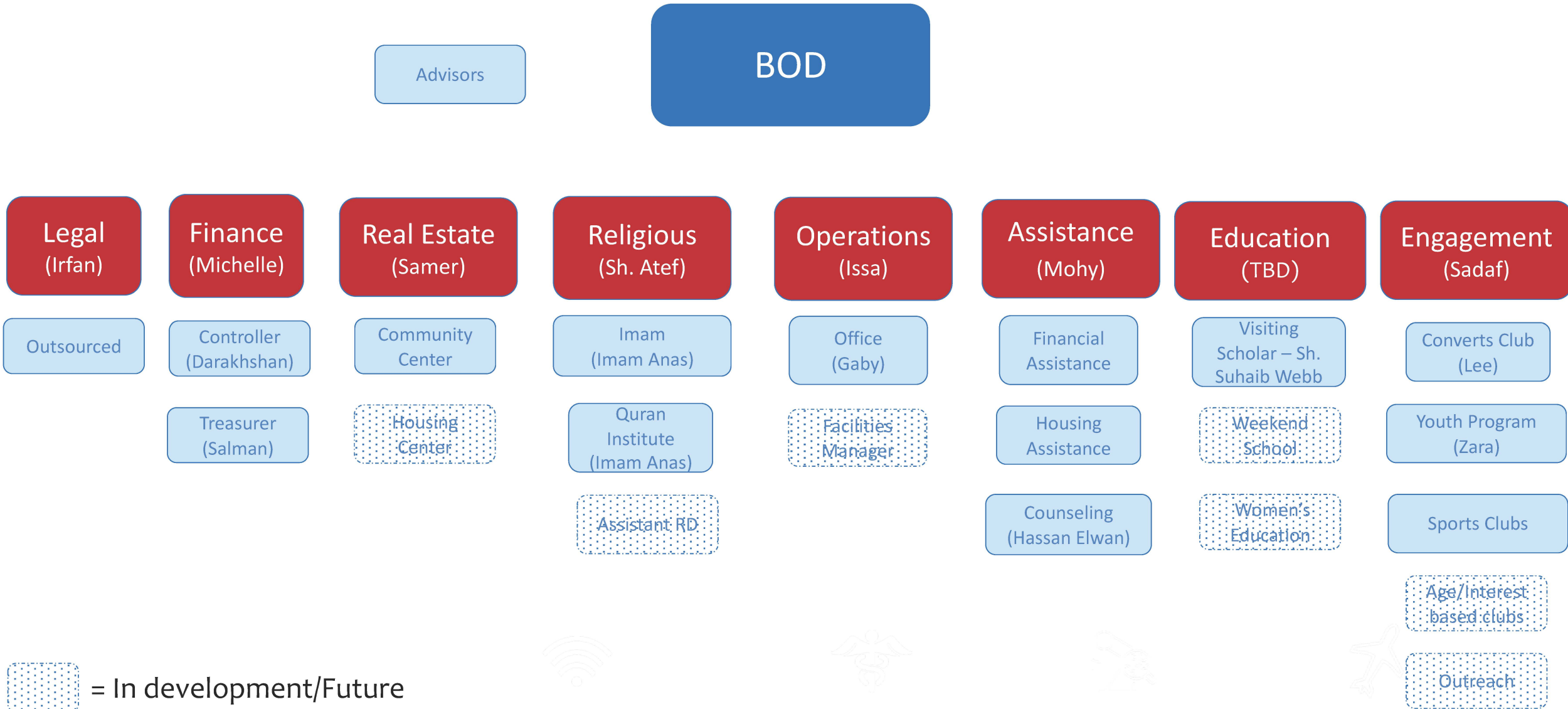
- **RC Organizational Structure**
- **Religious**
- **Community Assistance Program (CAP)**
- **Community Engagement**
- **Phase 2**
- **Financials**



RC Structure



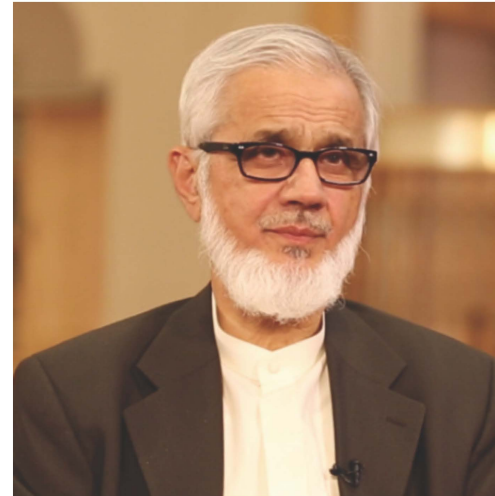
RC Organizational Structure



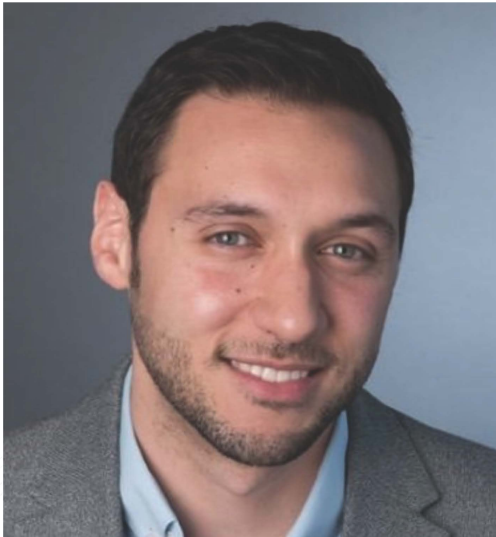
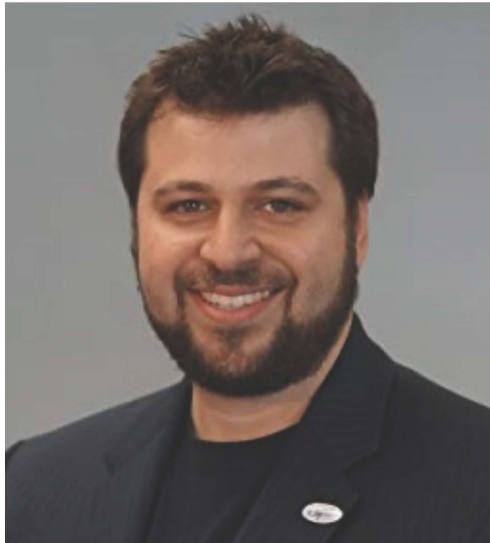
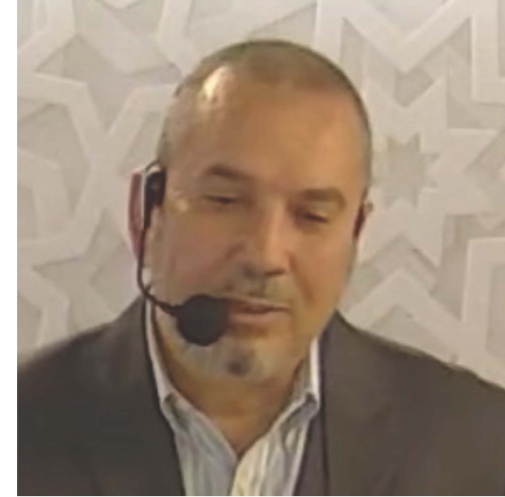
Religious



Guest Speakers and Programs



Guest Khateeb



Classes/Lectures

- Quran Institute:
 - Started in September 2022 with initial enrollment of 30 students
 - Now at 56 students (ages 8 through 17)
 - Seven teachers for a 4:1 student teacher ratio
 - Added practical living series monthly (how to make wudu, how to pray, etc)
- Seerah Class:
 - On Wednesday evenings
 - 11 sessions to date
 - 50-60 attendees per session
- Khatiras every day after Fajr and Ishaa
- Convert group teaching/support
- Additional programs in development



Community Assistance Program



CAP Structure

Community Assistance Program (CAP)

Future Projects

- Food
- Pantry
- Housing

Counseling (Family Consultation)

- Therapy
- Mediation
- Pastoral Counseling

Financial Assistance

- Rent
- Utilities
- Medical and Dental
- Direct Assistance

Scholarship & Vocational Training

- Tuition
- Vocational Training
- Cars and transportation

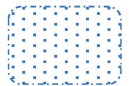
Distributions & Special drives/projects

- Zakat distribution
- Food Drives
- Lodging
- Homeless Feeding
- Funerals
- Local Muslim Inmates

Financial Aid RC Programs

- QI
- Counseling

School



= In development/Future



CAP – Year to Date Progress

- Conducted three zakat distributions benefiting approximately 370 families - cost \$130K
- Rental Assistances benefiting 24 families - cost \$52K
- Ramadan Feeding (Inland Empire) feeding 100 persons per night in the last ten days - cost \$9k
- Four Scholarships/vocation training benefiting 4 students - cost \$12k
- Other Forms of assistance (lodging, medical, Funeral, etc) - cost \$8k
- Started to offer Financial aid to students in need attending QI
- Counseling update next page – cost \$134k

CAP – Counseling Progress

- Established two professionally equipped counseling rooms
- Provided more than 1200+ counseling hours in 8 months (250+ counseling hours per month)
- Expanded team of professional counselors from 5 to 21, with average 8 counseling sessions daily
- Diversified services includes Adolescent Counseling, Trauma Therapy (Somatic and EMDR), Couples Therapy, etc
- Decreased waiting time for clients from 10-14 days to an average of 2-4 days
- Established intake/invoice system. Clients who can afford payments start contributing after 8 free sessions
- 30% of clients are referred by other organizations

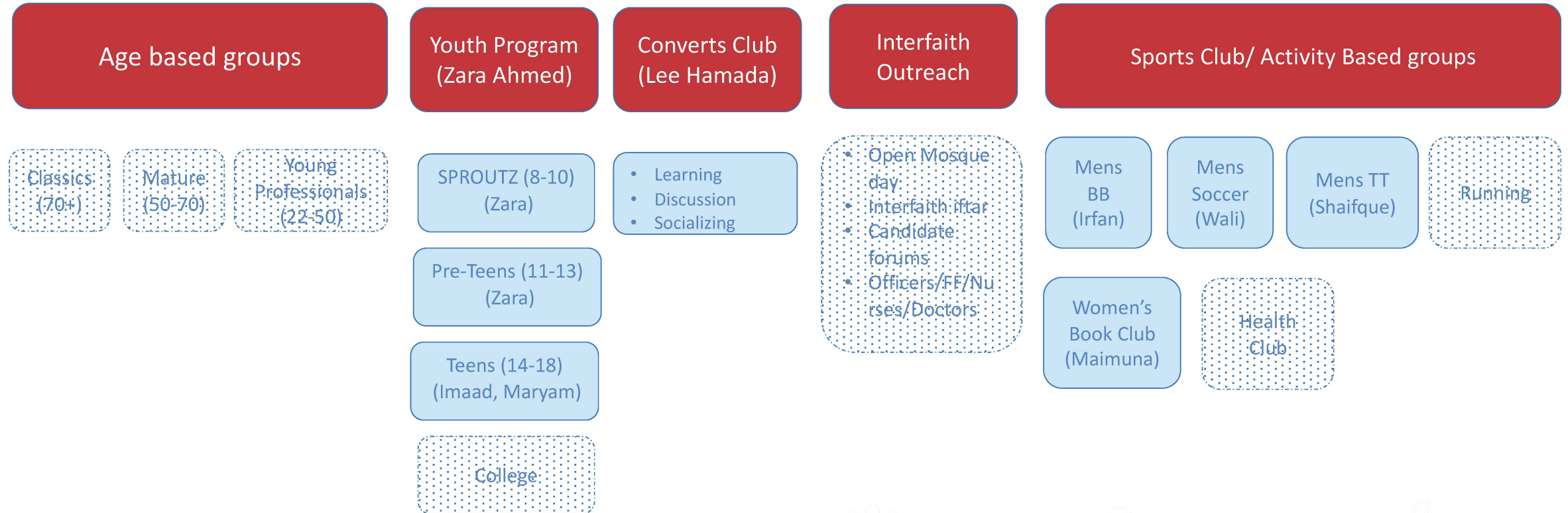


Community Engagement



CE Structure

Community Engagement (CE)



 = In development/Future

CE – Progress and Plans

- Established Youth Group
 - Pre-teens bi-weekly Friday group grew from 20 to 170+
 - Split into Sproutz (8-10) and Pre-teens (11-13)
 - Teens (14-18) grew from 20 to 50
 - College in progress
- Established Converts group and Women's Book Club
- Established Sports group
 - Men's Soccer
 - Men's Table tennis
 - Men's Basketball
 - Running group being formed
- Age based interest groups in process:
 - Classics (over 70) - Q1
 - Mature (50-70) - Q1
 - Young Professionals (22-50) - Q2
- Interfaith/Outreach – Q1



Phase 2



Musallah



Wudu



Gymnasium/Auditorium



MPR, Cafeteria, Patio



MPR, Cafeteria, Patio



Youth Center



Youth Center



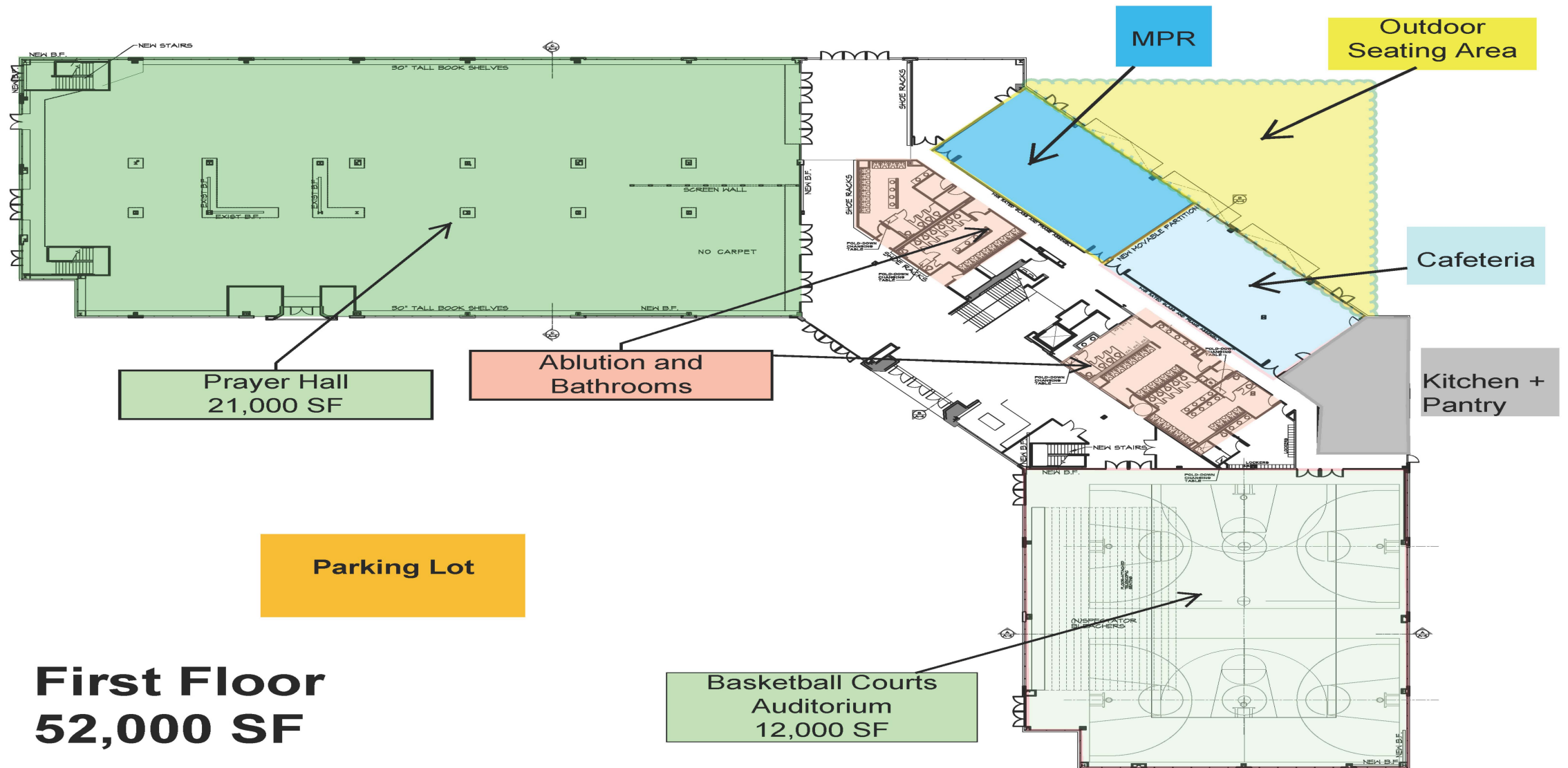
Library



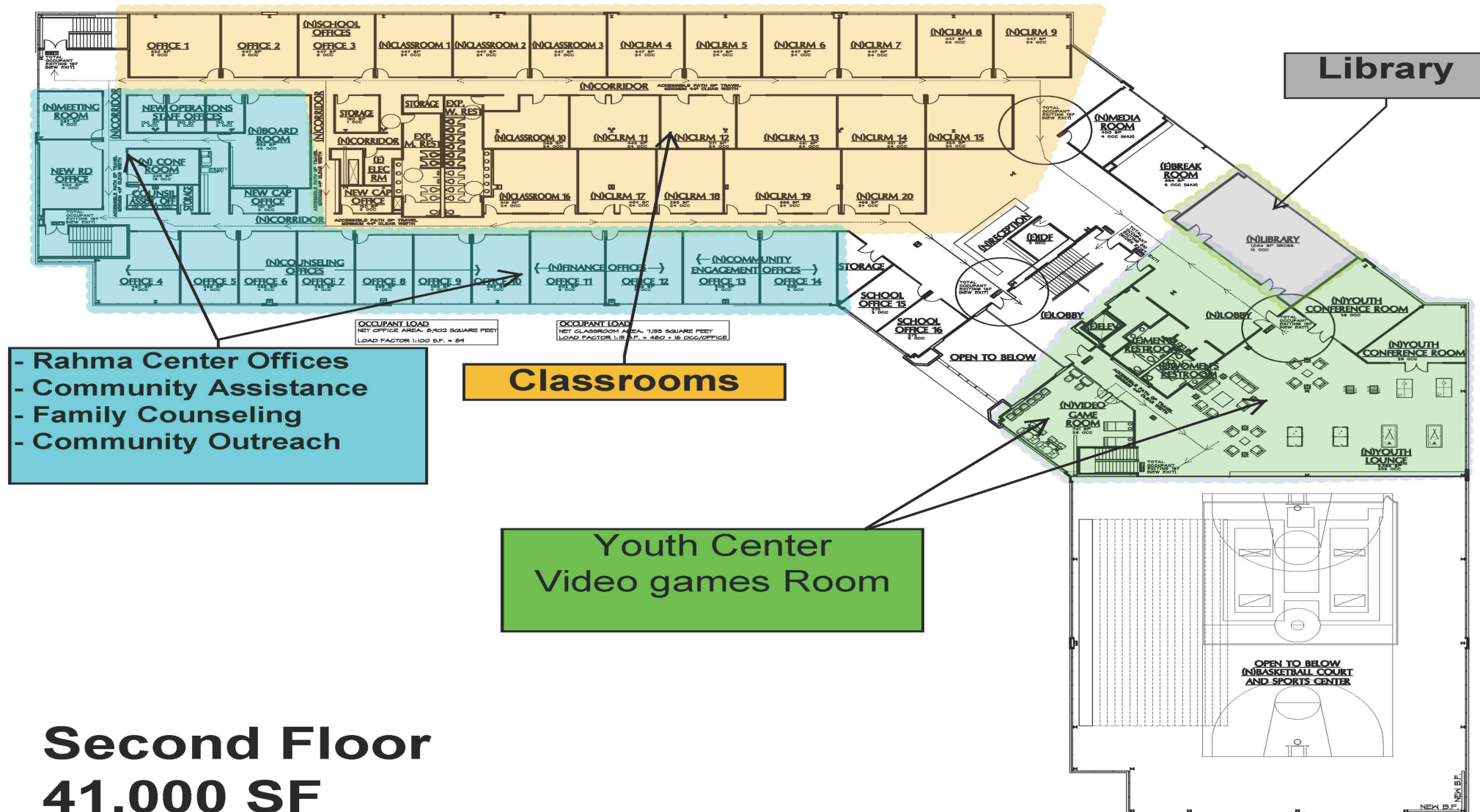
Classroom



Phase 2 – First Floor Layout



Phase 2 – Second Floor Layout



**Second Floor
41,000 SF**

Phase 2 – Status

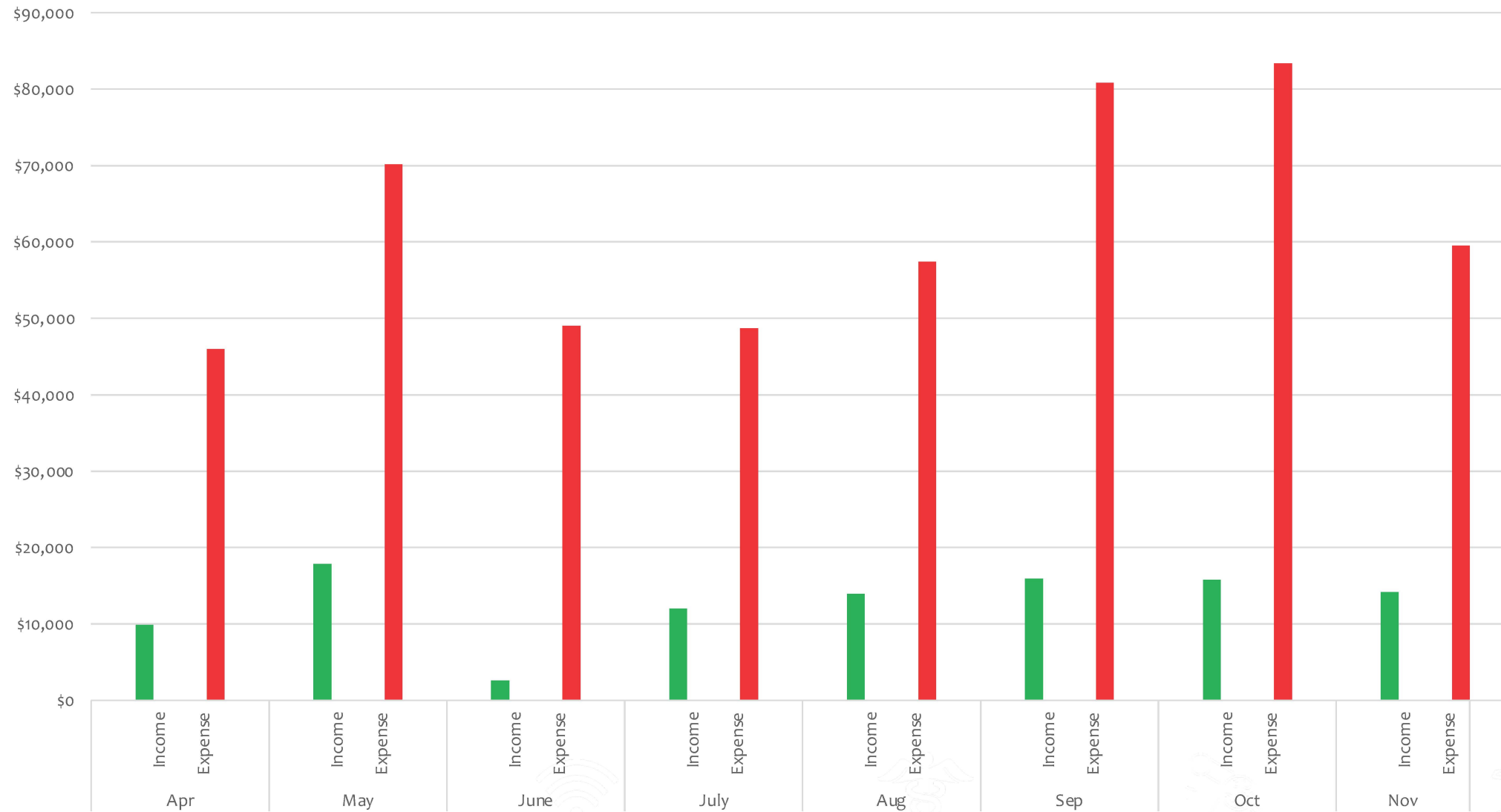
- SDP approval received from city for 2-year period
- Received first round of bids
- Completed second set of drawings for reducing costs
- Will get second round of bids based on revised drawings and then value engineer for final round
- Will be ready to start in late January/early Feb if funding is available



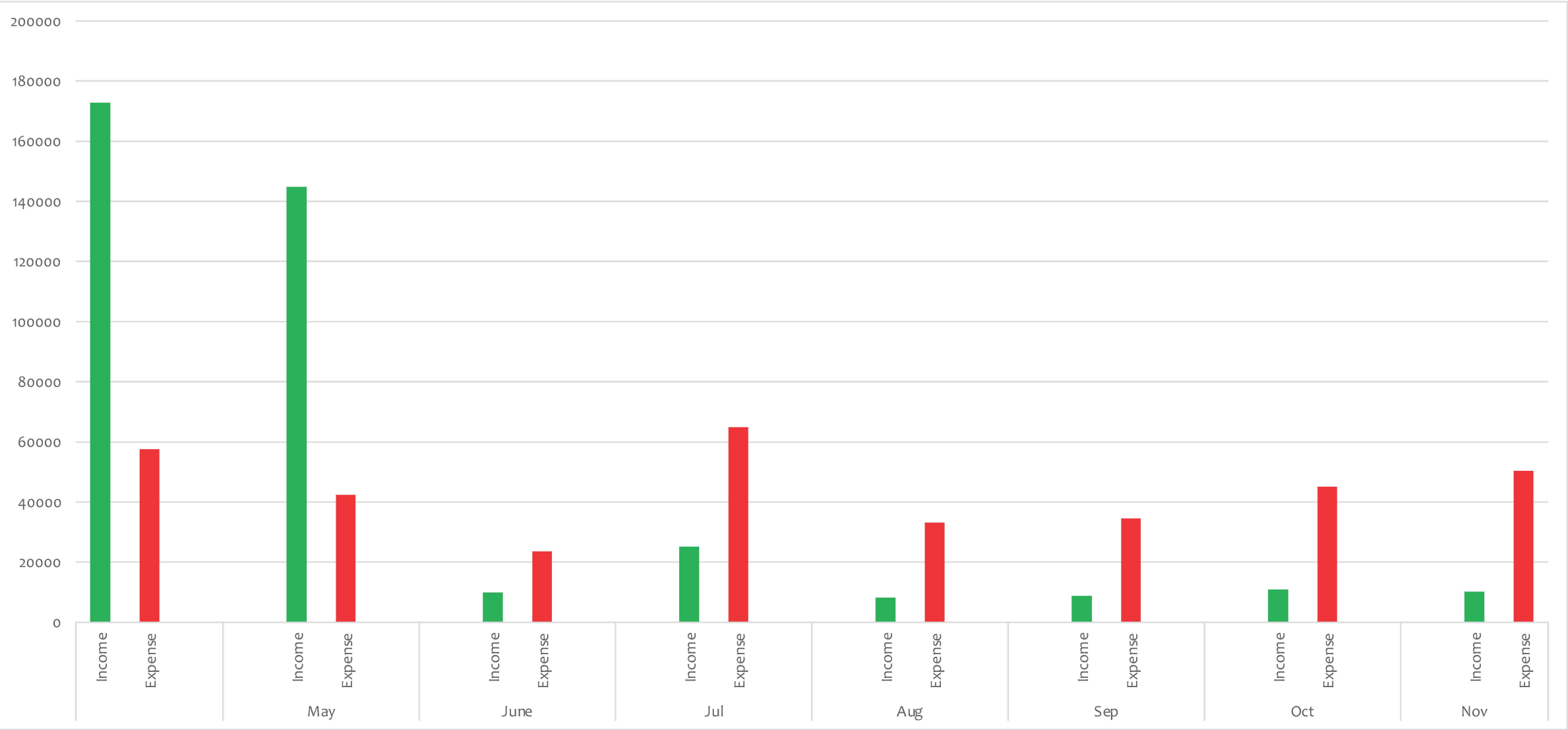
Financials



Financials – Ops (including QI)



Financials - CAP



Proposal

- Increase monthly recurring donations to at least \$200/family to cover at least half deficit by mid-Jan
- End of January - raise money for Phase 2A (middle of building)
- Ramadan (March) - raise money for Phase 2B (left side of building)
- 2024 - we raise money for Phase 2C (right side of building)



Donation page

Rahma Center

HOME

ABOUT US

NEWS

ASSISTANCE

EDUCATION

ENGAGEMENT

RELIGIOUS

VIDEO

DONATE

VOLUNTEER

Rahma Center

HOME / Donate

Donate

Donate by credit card or using your bank ACH:

Donate

Donate by Paypal:

Donate

VISA

MasterCard

Discover

Amex

Contact Info

27121 Towne Centre Dr., Suite 150
Lake Forest, CA 92610
Email: Office@therahmacenter.org
Phone: 949-989-2350
FEDERAL TAX ID : 85-3255194

Office Hours

Office open: Monday - Friday (12 pm - 7 pm)
Saturday (11am - 3pm)
Office closed: Sunday

Join Our Newsletter

Sign up today for The Rahma Center news and updates.

SIGN UP

f

@

2022 Copyright, The Rahma Center, All Rights Reserved

Donation

\$50

\$100

\$250

\$1,000

- Or -

Enter a Custom Amount: 50.00

Purpose*

Select a purpose

Wherever Needed Most Operations

Phase 2 Construction

Sadaqa

Zakat

Counseling Sadaqa

Continue

Powered by aplos

Confidential – Property of Rahma Center

32

Email contact

- Sheikh Atef: atef@therahmacenter.org
- Br. Mohy (CAP): mohy@therahmacenter.org
- Sr. Sadaf (CE) : sadaf@therahmacenter.org
- Br. Samer (RE): samer@therahmacenter.org
- Br. Nabeel: ng@therahmacenter.org
- Operations or general: issa@therahmacenter.org or office@therahmacenter.org





Thank You

